



OM20



OM50

	OM20	OM50
Max.IP extensions	20	50
Max.analog extensions	4	12
Max.IP trunks	24	62
Max.analog trunks	4	12
Max. concurrent calls	24	30
H×W×D	35×203×136 mm	41×286×161 mm
Model	2S/2, 4S, 4FXO	12S, 10S/2, 8S/4, 6S/6

Features

- Flexible auto attendant
- Click-to-call on contact list
- All-in-one system with analog-gateway modules, FoIP, recording, and voicemail
- Multilingual voice prompts
- Multi-site application via IP tie trunks
- Multi-tenant applications
- Failover to PSTN upon network failure
- Plug-and-play for IP phones
- XML/HTTP-based REST API supporting third-party application software
- Proven interoperability with popular SIP servers, such as Cisco CallManager, Broadsoft, Microsoft Lync, Huawei IMS and Asterisk
- Class I lightning protection

The OM20/50 (hereinafter “OM”) are All-in-One telephony systems. They provide seamless connectivity to not only PSTN and analog terminals, but also IP-based SIP trunks and SIP terminals. Using VoIP, the OM supports inter-office calls over the Internet or VPN. As enhanced model, OM also has some unique features such as Smart FoIP.

Always Connected with Your Customers

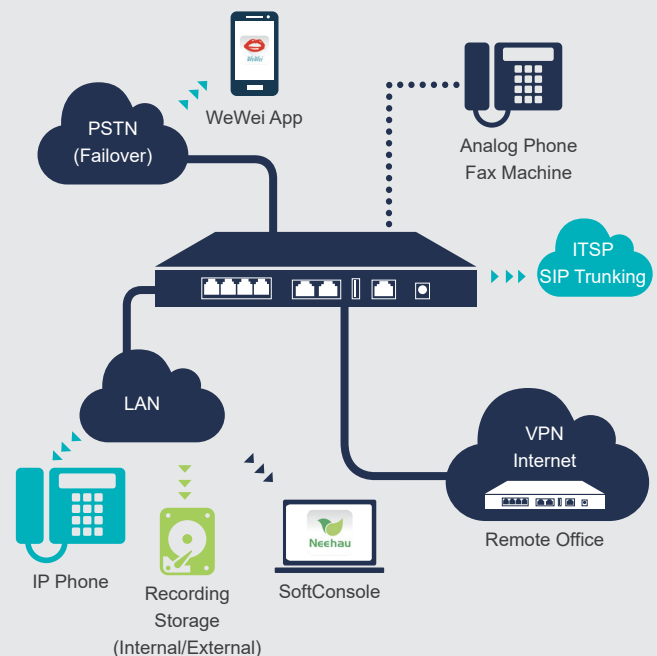
With features such as remote extension, call forking to your mobile phone and call-back, OM assures you that no matter where you are, whether in your office, traveling abroad, or working at home, you will never miss any important business call.

Improving Call Answer Rate

The smart auto attendant can provide 24/7 live answering service to customers, and direct the incoming calls efficiently to the extension or cell phone of the right person through configurable voice menus in business/non-business hours and holidays. Even, it can deliver the calls from VIP customers to the agents directly, bypassing voice menus.

Reduction of Telecommunications Cost

OM has all the IP remote-calling functions needed to support the remote worker, business travel, and communication with branches through the Internet. With IP connectivity, international or long-distance calls are turned into local toll-free calls. With advanced routing capabilities, OM can route calls intelligently according to call types. Combined with New Rock’s WeWei[®] softphone app and NeeHau[™] SoftConsole, you can achieve more effective and comfortable communications between you and your customers.



Specification

Protocols

Call control	SIP/UDP and SIP/TCP (RFC3261) , IMS (3GPP) , MGCP (RFC3435)
Network	Telnet, SSH, HTTP, HTTPS, DHCP/PPPoE client, DNS(A/SRV record), STUN

Media Processing

Caller ID	Bellcore Type 1&2, ETSI, BT, NTT, and DTMF-based CID
Codec	G.711 (a/μ) , G.729a
Fax over IP	T.38, G.711 pass-through T.38 compliant Group 3 Fax Relay Maximum fax rate of 33,600 bps (T.38)
DTMF	RFC2833, SIP-INFO, Transparency
Disconnect modes	Polarity reversal, Busy tone detection, Loop current
Voice-quality enhancement	Echo cancellation (G.168-2004, 64 ms tail length) , Adaptive jitter buffer

Voice

Smart auto attendant/ Receptionist	Business/non-business hours/holiday, Music on hold, Attendant group, Multilingual/multi-level IVR, Auto attendant profiles, VIP service
Dialing	Speed dial, Outgoing route selection, Least cost routing, Automatic route selection
Call settings	Call transfer, Call forward, Do not disturb, Barge, Silent monitoring, Simplified DISA etc
DISA	Authorization with calling party number, Authorization triggered by feature access code
Call recording	Call recording (total, on demand) , Recording priority/retention priority upon insufficient storage
Voicemail	MWI (polarity reversed/FSK/high voltage)
Analog trunk	Caller ID, Polarity reversal detection
SIP trunk	IMS, Multiple SIP servers, Skype Connect
Phone status indication	Status subscription (BLF)

Security

User-defined ports	SIP port, RTP port, HTTP/HTTPS port to access the Web GUI
Access list	IP addresses allowed to access HTTP/HTTPS/ Telnet/SSH service
Encryption	Encrypted password/PIN
IP phone protection	Prohibition on outgoing dialing by IP extensions on public network, User-Agent authentication, Registration password cracking protection

Web GUI login protection	Prohibition on login from public IP address, Login password cracking protection
---------------------------------	--

Security level	Three levels of security settings
-----------------------	-----------------------------------

Intrusion prevention	Ping blocking
-----------------------------	---------------

Provisioning, Administration and Maintenance

Device management	TR069, SNMP
--------------------------	-------------

Application interface	API (XML/HTTP)
------------------------------	----------------

Auto provisioning	Download configuration file via TFTP/FTP/ HTTP/HTTPS, Obtaining ACS address via DHCP option 66 or redirection
--------------------------	---

Phone management	Plug-and-play for IP phones, Configuration-free installation of softphone
-------------------------	--

Local log storage	Internal USB flash drive
--------------------------	--------------------------

Data capture	Port capture, Packet capture
---------------------	------------------------------

Configuration	Bulk import/export. Resetting to the factory default
----------------------	--

Status monitoring/ alarming	Status/performance monitoring or reporting. Status/performance alarms
------------------------------------	--

Other

Multi-site voice	Uniform dial plan, Call forward, Call transfer. Outbound trunk sharing, Three-way calling, Attendant on remote site
-------------------------	---

802.IP QoS/CoS	IP TOS/TSCP
-----------------------	-------------

Media stored in internal USB flash drive	Local recording, Voicemail, Customer information, User-uploaded IVR file
---	---

Hardware

	OM20	OM50
CPU	700 MHz	700 MHz
RAM	64 MB	128 MB
FLASH	16 MB	16 MB
Internal USB flash drive	16 GB	16 GB
Weight (net)	0.72 kg	1.2 kg
DC power input voltage	12 VDC/1.5 A	12 VDC/1.5 A
Power consumption	9 W	18 W
Mounting	Desktop,Rack	Desktop,Rack
Operating	Temperature: 0 to 40°C Humidity: 10 to 90% RH (non-condensing)	
Storage	Temperature: -40 to 70°C Humidity: 5 to 90% RH (non-condensing)	